

CONSERVANCY

FOR CUYAHOGA VALLEY NATIONAL PARK

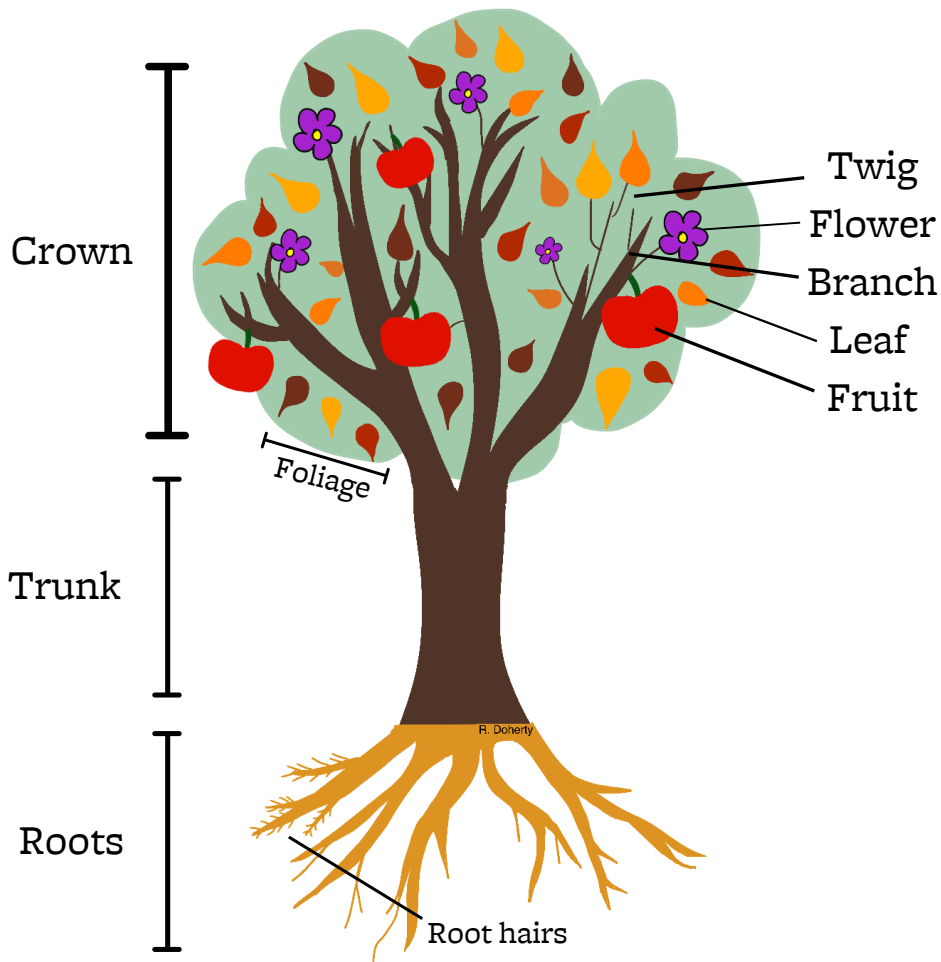
— CUYAHOGA CONNECTIONS —

JOURNAL VOL. 2

Trees and Leaves

Parts of a Tree

Trees are made up of three main parts—the leaves, the trunk, and the roots. The leaves convert sunlight, carbon dioxide, and water into sugar through a process called photosynthesis. The trunk contains many layers. Some layers protect the tree from outside forces and others carry water and nutrients back and forth between the roots and leaves. The roots anchor the tree to the ground and absorb water and nutrients.



Autumn Leaves

Color in the leaves for each season!

Spring and Summer

Leaves absorb energy from the sun using cells containing chlorophyll. Chlorophyll is not only essential to photosynthesis, but it also gives leaves their green color!



Autumn

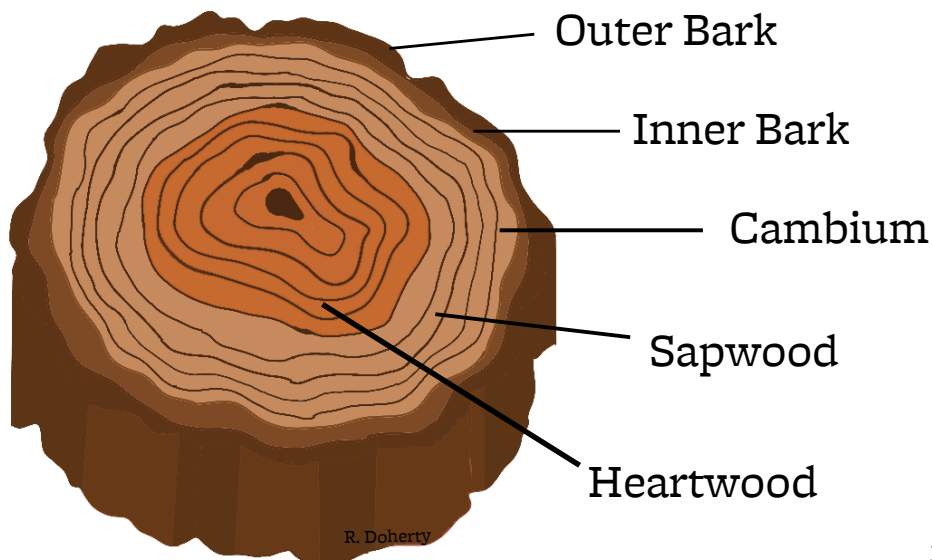
As daylight hours shrink and temperatures cool, leaves stop making food. The chlorophyll breaks down, letting yellow and orange colors become visible, as the green disappears. Varying amounts of chlorophyll means varying colors in the fall!



Trunk

There are 5 main layers to a tree's trunk!

1. The outer bark protects the tree from weather and insects
2. The inner bark is the pipeline through which food travels through the tree
3. The cambium is the growing part of the tree. Every year, new wood is produced by the leaf buds at the end of branches
4. Sapwood is the pipeline for water up the tree
5. Heartwood contains the dead cells in the center of the tree. This central pillar supports the tree, and is filled with sugars and oils



Leaf it to Trees!



Leaves release _____ helping us to breathe.

Leaves & fruit provide _____ for wildlife such as deer, insects, and birds.

Trees provide _____ for owls, squirrels, and other animals.

The _____ keep soil in place, providing a healthy environment for plants to grow.

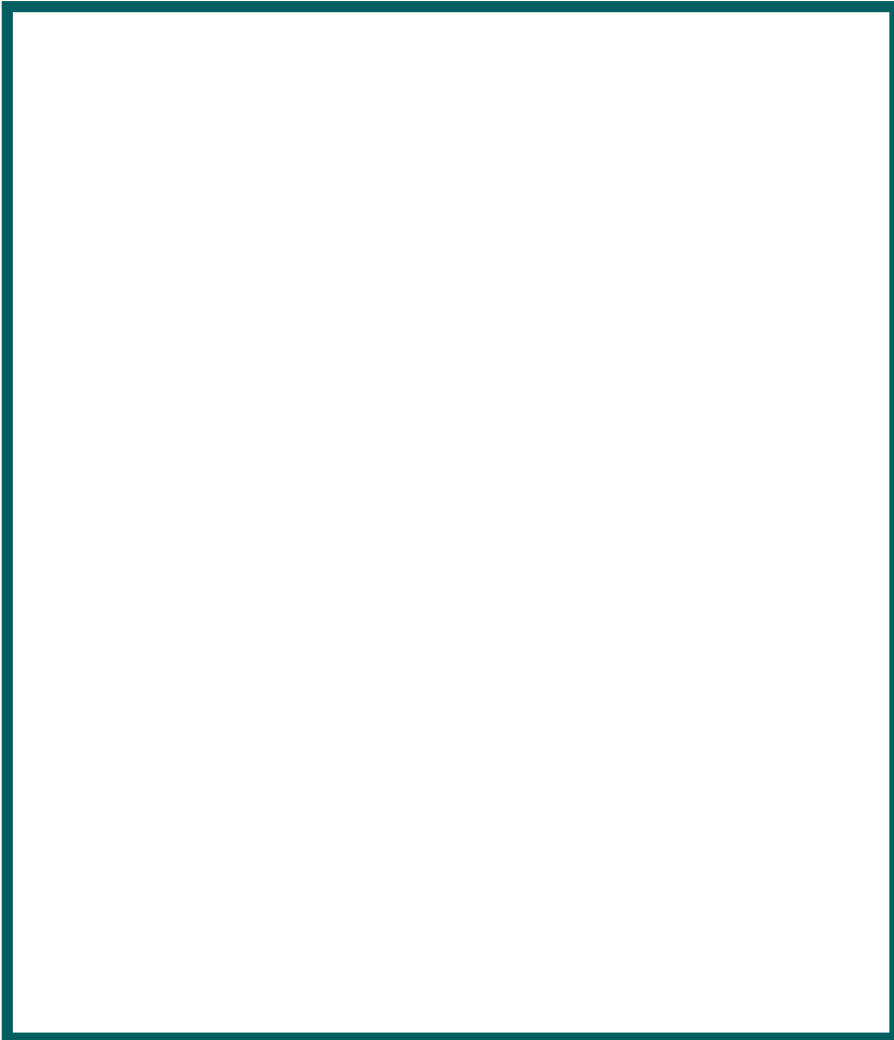
Roots filter _____, helping to keep our streams and rivers clean!

Word Bank

Oxygen Roots Habitat
Water Food

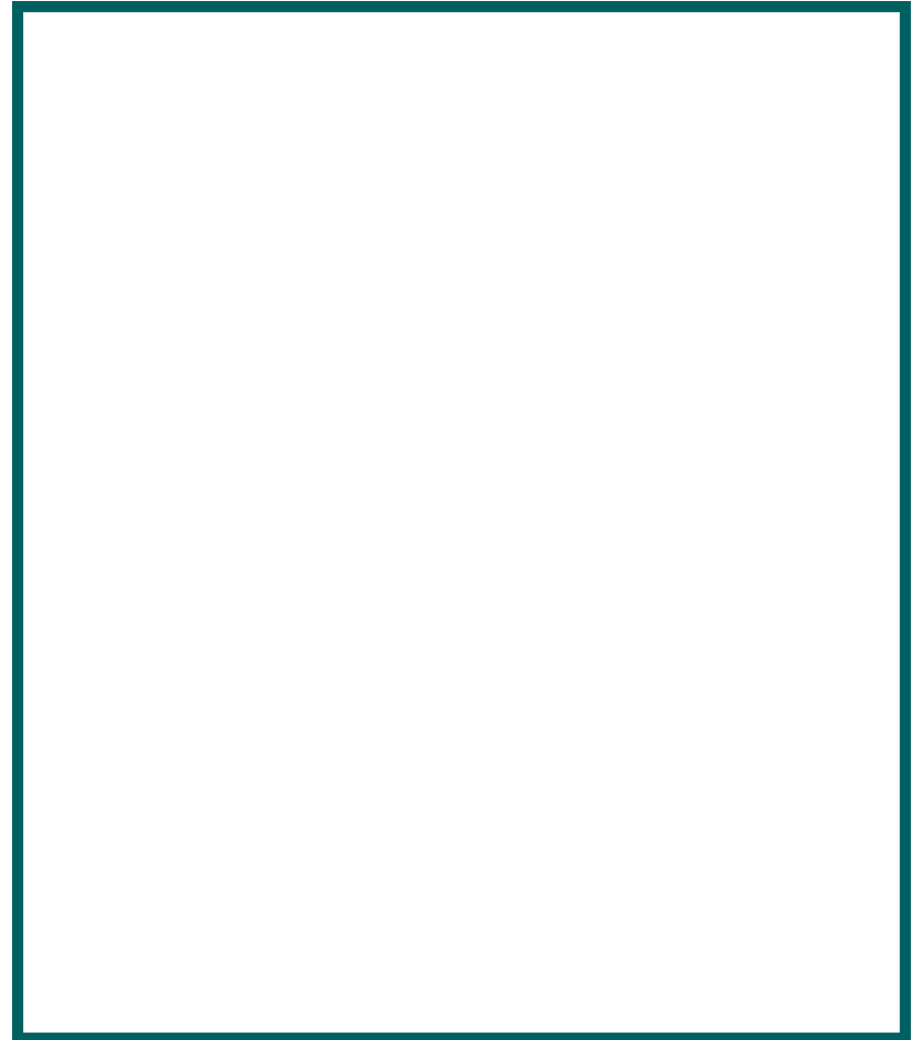
Zoom In

Find a leaf in your backyard, on a sidewalk, or in CVNP! Pretend you are a magnifying glass, and focus on a small part of the leaf, such as a corner, stem or small section of the leaf's edge. Draw what you see—being sure to be as detailed as possible!



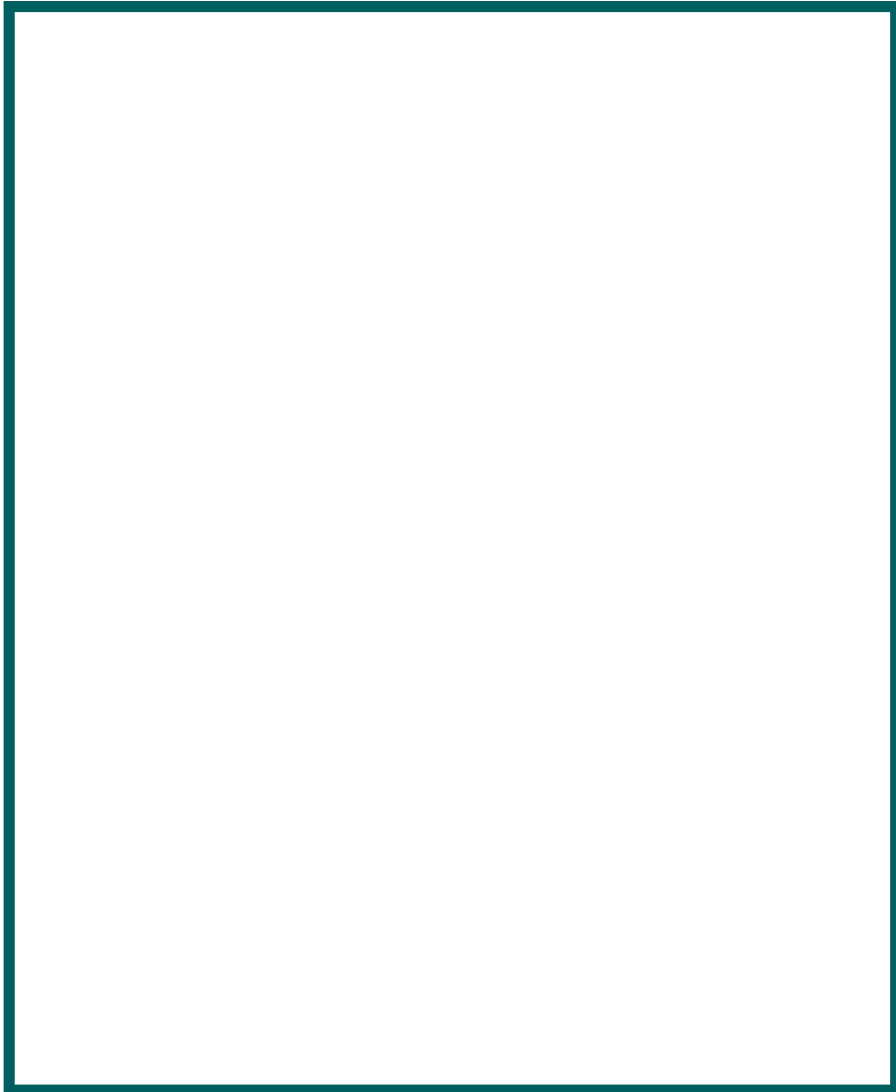
Zoom Out

Using the same leaf, take a step back. Looking at the leaf as a whole, draw what you see.



Creative Writing

Imagine you are an insect climbing the tallest tree you've ever seen. What do you experience along your journey? When you reach the top, what do you see? (Feel free to use a separate sheet of paper if you need!)



Nature Observation

Observe a tree from as many different viewpoints as possible. What do you notice? What do you wonder about it? What does it remind you of? Use this page to write or draw your observations.

