



TRAILS NOW

CVNP Bridle Hiking Trails 2022:
Work Completed

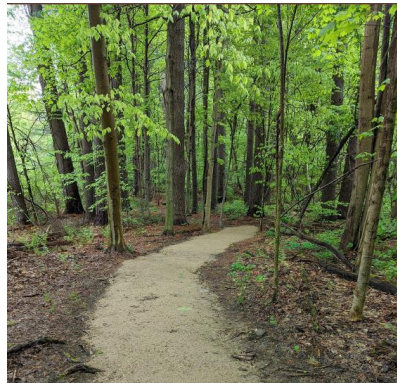




A SPECIAL THANK YOU

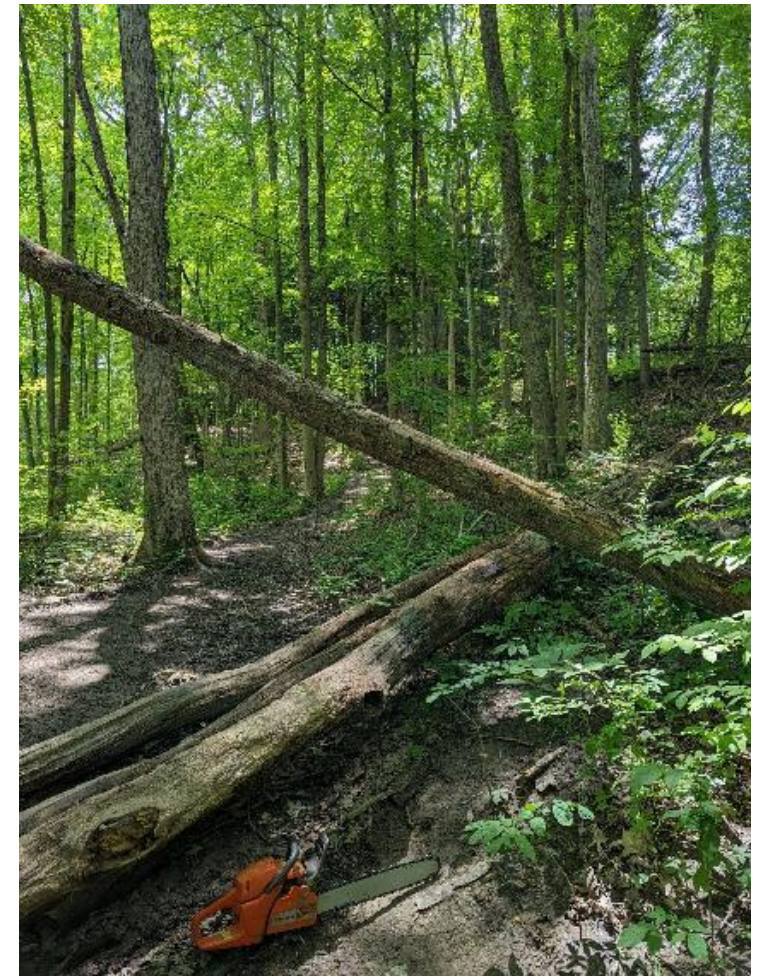
In partnership with the Conservancy for Cuyahoga Valley National Park Trails Now Campaign and generous donations by The Ray and Jan Dalton Family Foundation, CVNP was able to create a small trail crew specifically for repairing Bridle-Hiking trails throughout the park.

The Dalton's matching gift, paired with individual, corporate and Ohio Horseman Council Chapter gifts, as well as trail assistance from the Medina Chapter Ohio Horseman's Council volunteers, resulted in successful repairs to Perkins, Riding Run and parts of the Valley Trail in 2022.



NPS/ Arrye Rosser





Downed Tree Removal

At the beginning of the season, the trail crew primarily removed downed trees from the bridle trails.



Material Transportation

The trail crew moved material onto sections of the trails that needed work, primarily using UTVs on flat sections and power wheelbarrows on steeper sections.

Equipment Operator Help

Toward the end of the season, the park's equipment operator helped with some of the difficult hilly sections, which saved time and expedited work.

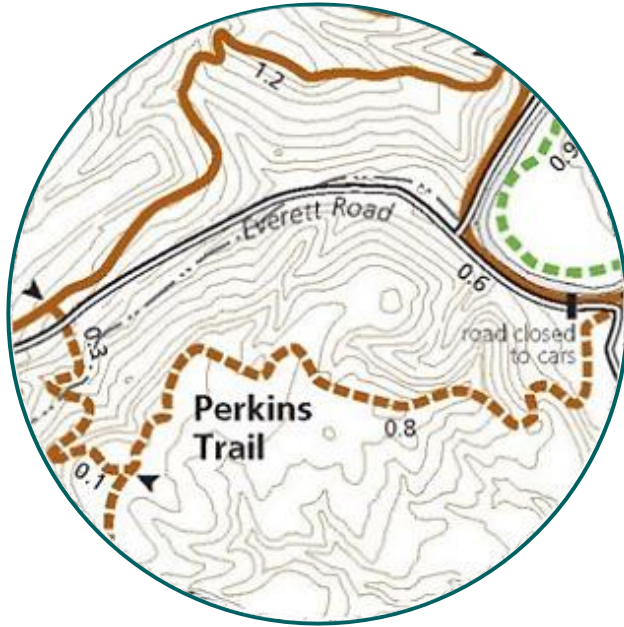


Sign Making

NPS is in the process of updating park signage on the trails from wood to metal. Metal is more durable and will not degrade over time.



New signage posts are being made to replace rotten ones.



Perkins Trail

This is one of four trails in the park to have earned CVNP's most difficult rating, and for good reason: it's tough. This trail is a fun and challenging hike, run, or ride. It's open to horses, but people on foot are welcome, too.

Improvements Made:

- Surface maintenance
- Removal of collapsing boardwalk
- Trail reroutes
- Building of turnpikes
- Creation of hardened crossing
- Drainage installations
- Brush Clearing

Tread Armoring

The trail crew hardened tread throughout the season.

This practice minimizes maintenance and stabilizes the surface for use impact. It also minimizes erosion and drainage impacts to natural resources.



Hardened Tread Crossing

This section of the trail has spring runoff and flowing water during heavy rainstorms.

The trail crew installed large, flat stones to encourage water to pass through, providing a stable surface to cross.



Turnpikes

The trail crew used turnpike construction in areas where the trail tread remains very wet during the year and relocation options are not available.

This section was a perfect spot for turnpike construction.





Decaying Boardwalk to Turnpike

The decaying boardwalk was a concern. The trail crew removed it and installed a new 30 foot turnpike. Installing the turnpike raised the tread and created a stable, dry path for both horses and people.



Uprooted Tree

A tree fell on this section, and the roots took part of the trail with it. The trail crew placed a rock retaining wall on the outslope side of the trail and then covered it with stone and trail mix.

Trenched Out Trail

This portion of the trail was divided in half by a foot-deep trench.

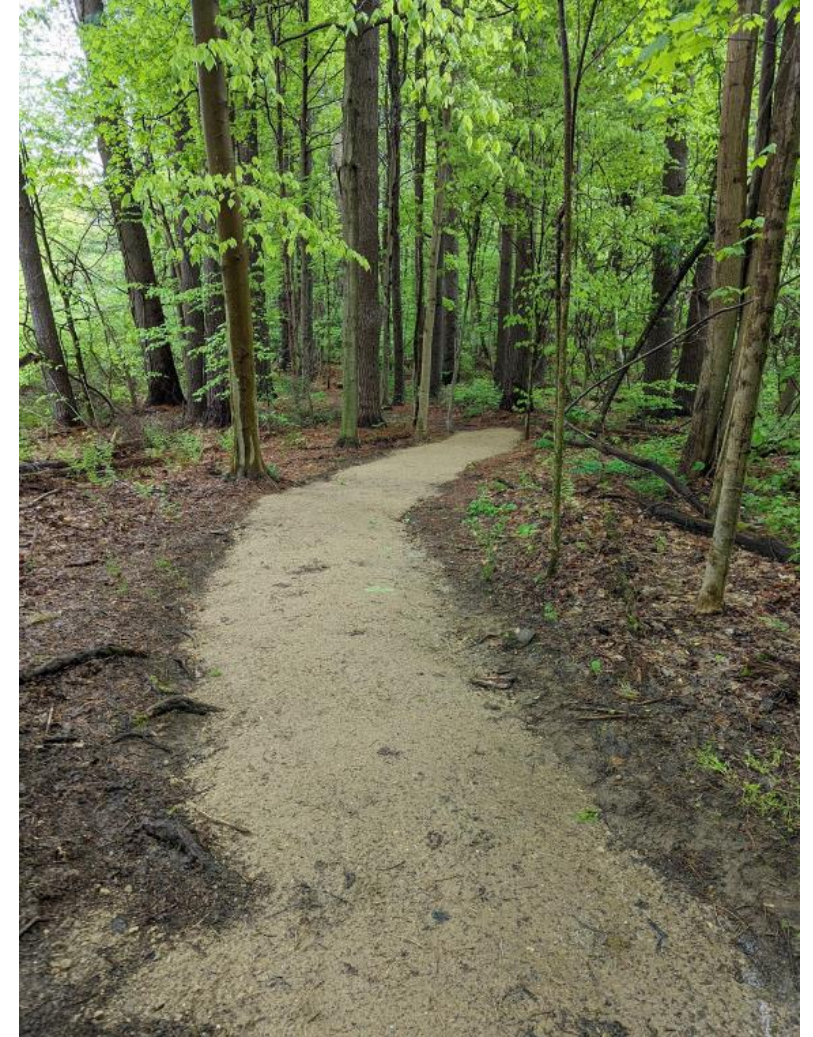
To encourage water to flow off the trail, the trail crew reworked the grade, created drains and dips, and topped it off with stone and trail mix.



Surface Maintenance

Mixed aggregate was used on trail portions located on flat terrain with poor drainage.

It was also used in areas where the use of dips and reversals were not feasible.





Riding Run Trail

Riding Run Trail ascends a short slope before plateauing onto a wide path. It gradually leads uphill where the valley slides off to the right. The trail traverses an old township road through a forest. Toward the end, downgrades make Riding Run a moderate-to-difficult bridle trail.

Improvements Made:

- Surface maintenance
- Trail reroute
- Drainage installation
- Removal of eroded steps
- Filling in trenching
- Regrading of steep hill
- Brush Clearing

Trail Reroute

The old section of this trail had unsustainable drainage conditions. It was closed off and rehabbed.

The trail crew constructed a new section of trail with a proper grade reversal and cross slope to ensure drainage.



Trenched Out Hill

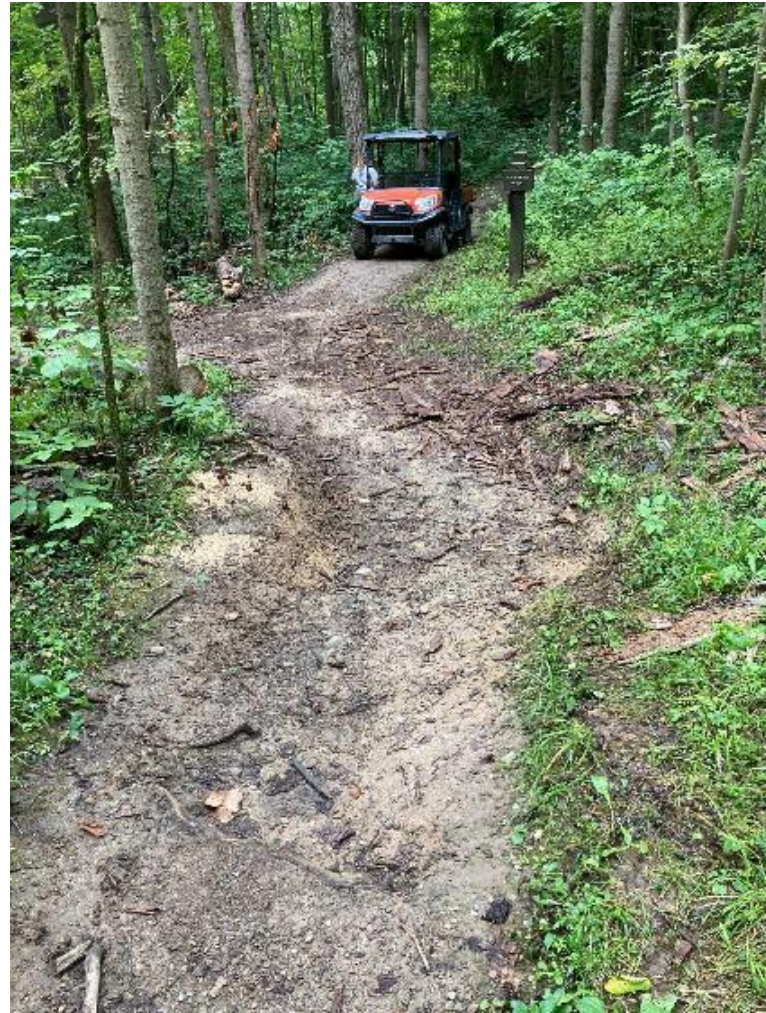
This section of trail was trenched out due to water running straight down the trail.

The trail crew mitigated this issue by creating drainages and adding material.



Creating a Drain

By clearing out a downed tree in the drain and digging out a passage for water, this section of trail is no longer muddy.





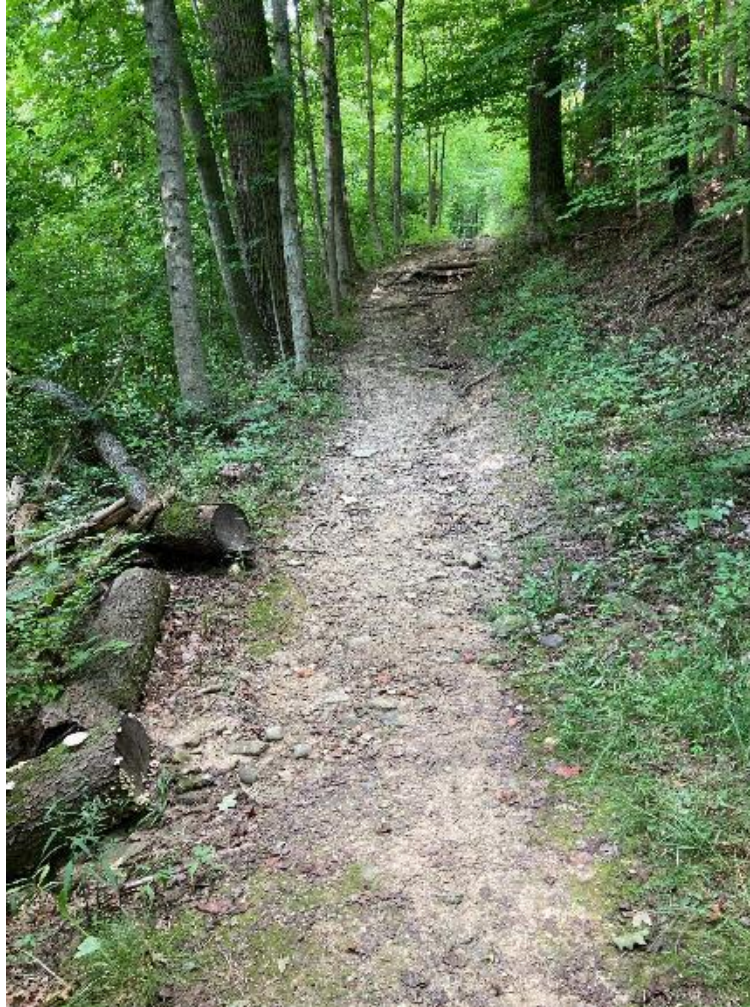
Regrading the “Big Hill”

This section of the trail was eroded and had many exposed roots and trail braids. To solve these issues, the trail crew shifted the trail, regraded it, installed drainage dips, and topped it off with stone and trail mix.

Removing the Dreaded Check Steps

Since this trail is primarily used by equestrian riders, check steps were removed for safety reasons.

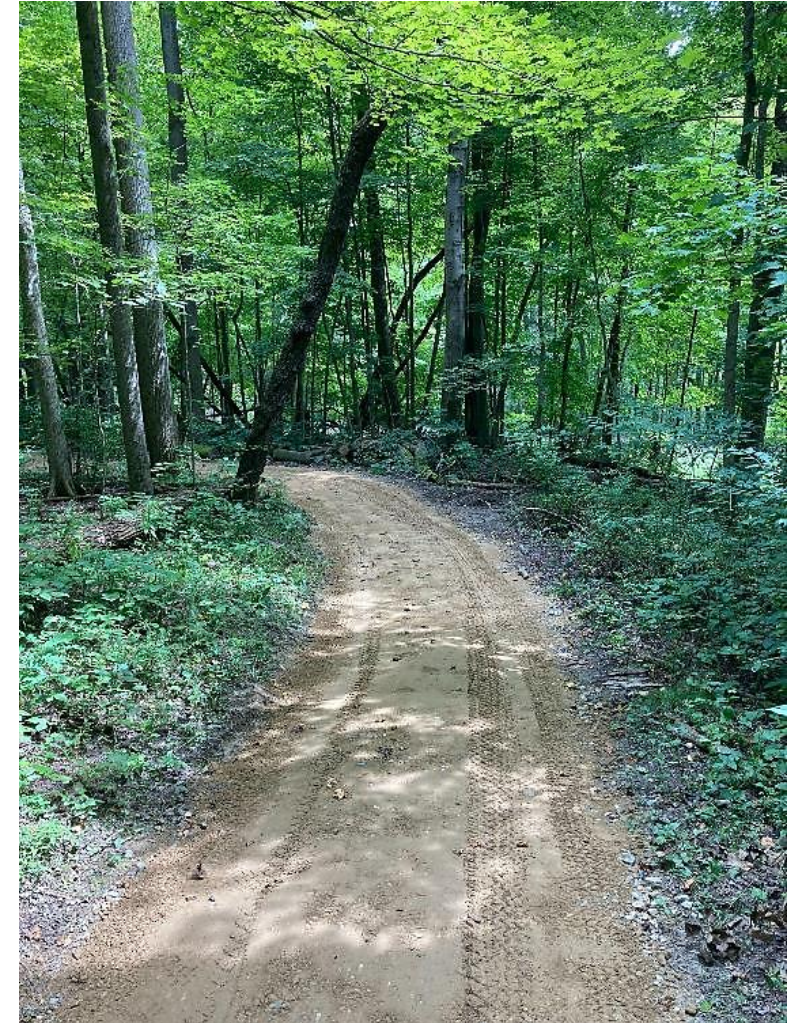
The grade of the hill was also inadequate, so it was regraded and drainage was improved.



Fall Line Trail Trenching

Most of the Riding Run Trail was trenching out due to lack of sustainable drainages.

This was remedied by adding drains, crests, dips, and trail material.





South Valley Trail

The South Valley Trail is a 20-mile, horse-friendly trail that welcomes runners and hikers and provides a good challenge.

Improvements Made:

- Surface maintenance
- Drainage installation
- Removal of eroded steps in two locations
- Regrading of hills
- Installation of bridge
- Brush clearing

Installing a New Bridge

Once passable, this ditch degraded over time, making it difficult to cross.

Since avoiding the ditch was not possible, the trail crew built a bridge to cross it.





Hill Near Spicy Lamb Farm

The hilly section of the Valley Trail was improved. It had poor drainage, trenched out areas, and significant mud. The park's equipment operator regraded, removed berm formations, and added effective drainage. The trail crew then added stone and trail mix for the finish.



Berms are made of soil that has built up on the outside of the trail tread. They form when water erodes tread that wasn't compacted during construction, depositing it on the edge of the trail. This creates a barrier that prevents water from sheeting off. When water runs down the tread, it gathers volume and soil as it goes.

Berm formation is the single largest contributor to erosion of the tread. Removing berms is always the best practice.



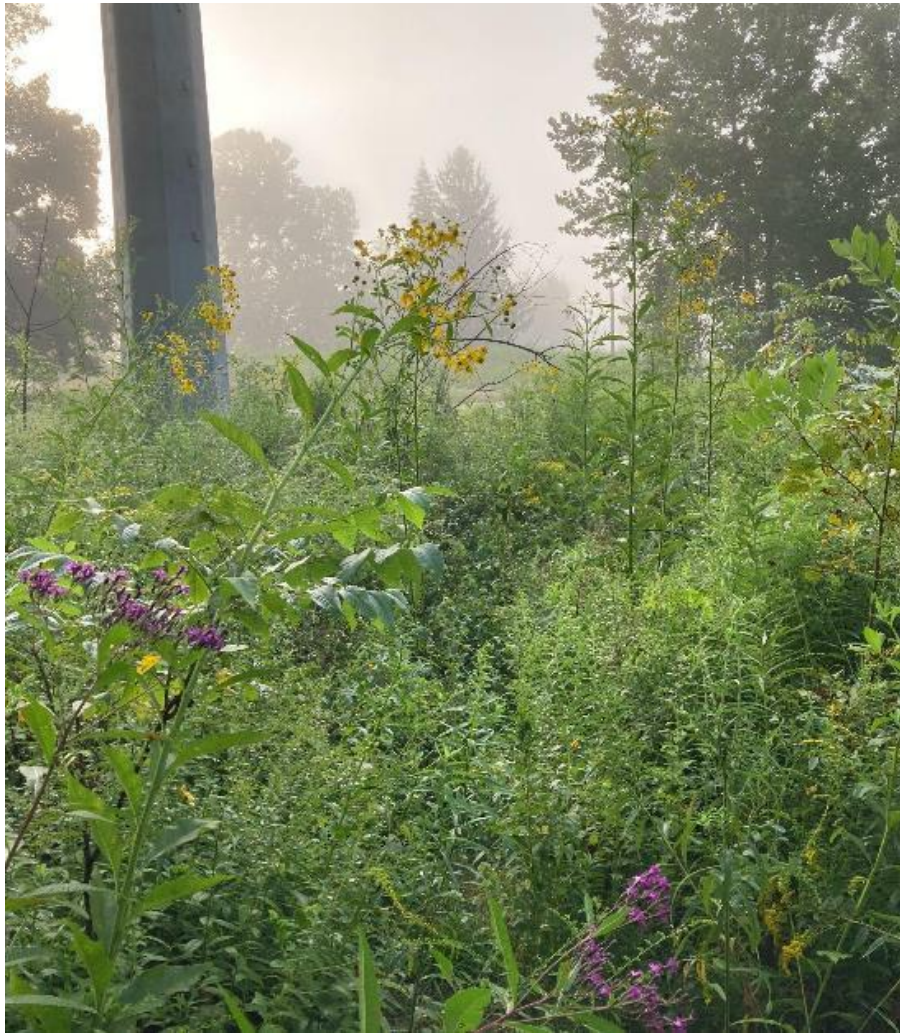
Brush Clearing

This section of the Valley Trail needed a lot of attention after being closed since early 2021.

Special attention was taken to make sure the overhead clearance (10 feet) is clear for horseback riders.



Brush was cleared at the old golf course.



Brush was also cleared near Akron-Peninsula Road.

Ohio Horseman's Council (OHC) Volunteer Projects

With the help of the Medina Chapter OHC, work was completed on two sections of the Valley Bridle Trail.



Flooded Trail Adjacent to Akron-Peninsula Rd.

This closed section of trail was severely flooded due to beaver activity.

To reopen the trail, OHC assisted the trail crew in a creative solution to create a useable passage through the water.





Landscape fabric was laid down, followed by a thick layer of rock.





Channels were created to let water flow to the other side and then trail mix was added on top to finish.



Trail Hardening Behind Fabio Barn

OHC helped repair the muddy areas by adding material and creating drains.

The Numbers



Miles of Trails Improved

Approximately 11 Miles



OHC Volunteer Hours

297 Hours



Estimated NPS Hours

Approximately 2,500 hours



Estimated Tons of Material

75 Tons

To learn more about 2023 Bridle-Hiking Trail Projects and how you can help, click here: [Trails Now: Bridle Hiking Trail Fund](#)

Have you ever wondered what to do when you encounter a horse and rider on one of the park's designated horse trails?

Click on the video below to learn how sharing the trails can help make every trip safe and fun for everyone!



<https://www.nps.gov/cuva/planyourvisit/horse-trails.htm>

